


Tests [Edit Test](#)

 Tests
  Groups
  Links

Primary 4 - Term 2 (SA1) Science (Nanyang)

 Duplicate

 Print

 Delete

 Assign Test

Test Introduction

[+ Add Introduction](#)

51 Questions (64 Points)

Question Bank: 19,950 Questions 

Test Questions

1 Test Assignment

Question 1

Primary 4 Science » Primary 4 Science (Term 2)

2 pts

Booklet A (28 x 2 marks)

For each question from 1 to 28, four options are given. One of them is the correct answer.

Which of the following statements about all living things are true?

- A All living things need air, food and water
- B All living things can make their own food
- C All living things can respond to surrounding changes
- D All living things can move from place to place on their own

- A) A and C only
- B) A and D only
- C) B, C and D only
- D) A, B, C and D

Question Type: Multiple Choice
Randomize Answers: No
Date Added: Wed 7th Oct 2020
Last Modified: N/A
QID#: 24,116,903

[Answers](#) | [Edit](#) | [Duplicate](#) | [Used In](#) | [Reorder](#)

[Remove From Test](#)

Question 2

Primary 4 Science » Primary 4 Science (Term 2)

2 pts

Amanda classified the following things into two groups.

Living Things	Non-living Things
fern	car
rose	cockroach
orchid	textbook

Which one of the following has been **wrongly** classified?

- A) car
- B) fern
- C) orchid
- ✓ D) cockroach

Question Type: Multiple Choice
Randomize Answers: No
Date Added: Wed 7th Oct 2020
Last Modified: N/A
QID#: 24,116,907

[Answers](#) | [Edit](#) | [Duplicate](#) | [Used In](#) | [Reorder](#)

[Remove From Test](#)

Question 3

Primary 4 Science » Primary 4 Science (Term 2)

2 pts

Which one of the following correctly states the similarity and difference between a fern and a sunflower plant?

	Similarity	Difference
(1)	Both reproduce by spores.	The sunflower plant makes its own food but the fern does not make its own food.
(2)	Both reproduce by seeds.	The sunflower plant has a strong stem but the fern does not have a strong stem.
(3)	Both grow on land.	The sunflower plant bears flowers but the fern does not bear flowers.
(4)	Both make its own food.	The sunflower plant has roots but the fern does not have roots.

- A) 1
- B) 2
- ✓ C) 3
- D) 4

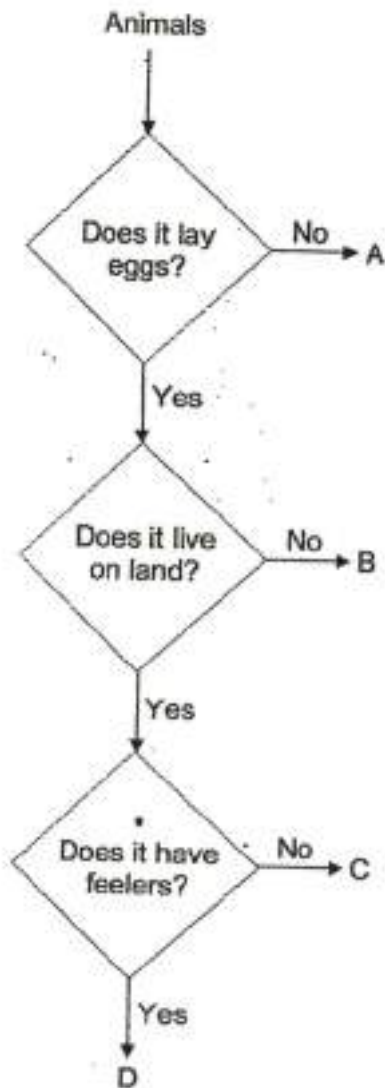
Question Type: Multiple Choice
Randomize Answers: No
Date Added: Wed 7th Oct 2020
Last Modified: N/A
QID#: 24,116,917

Question 4

Primary 4 Science » Primary 4 Science (Term 2)

2 pts

Study the flowchart below.



Based on the flowchart above, which animal is most likely a chicken?

- A) A
- B) B
- ✓ C) C
- D) D

Question Type: Multiple Choice
Randomize Answers: No
Date Added: Wed 7th Oct 2020
Last Modified: N/A
QID#: 24,116,949

Question 5

Study the classification table below.

X	Y
dog	crocodile
rabbit	goldfish
tiger	snake

Which one of the following correctly represents X and Y?

	X	Y
(1)	have feathers	have hair
(2)	lay eggs	give birth to young alive
(3)	have hair	have feathers
(4)	give birth to young alive	lay eggs

- A) 1
 B) 2
 C) 3
 ✓ D) 4

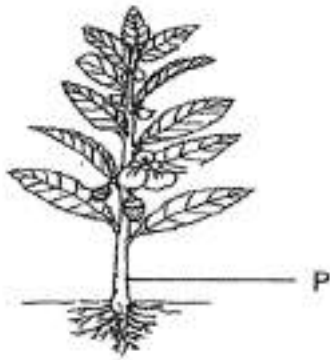
Question Type: Multiple Choice
Randomize Answers: No
Date Added: Wed 7th Oct 2020
Last Modified: N/A
QID#: 24,116,953

[Answers](#) | [Edit](#) | [Duplicate](#) | [Used In](#) | [Reorder](#)

[Remove From Test](#)

Question 6

Study the diagram of the plant shown below.



Which of the following statement(s) correctly state(s) the function(s) of part P?

- A It holds the plant upright.
- B It makes food for the plant.
- C It anchors the plant to the ground.

- ✓ A) A only
- B) A and C only
- C) B and C only
- D) A, B and C

Question Type: Multiple Choice
Randomize Answers: No
Date Added: Wed 7th Oct 2020
Last Modified: N/A
QID#: 24,116,957

[↗ Answers](#) | [✎ Edit](#) | [📄 Duplicate](#) | [📌 Used In](#) | [⬇ Reorder](#)

[Remove From Test](#)

Question 7

Primary 4 Science » Primary 4 Science (Term 2)

2 pts

Three pupil made the following statements about the function of each plant part

Anne The stem hold the plant upright

Bob The leaves have tiny holes to take in water

Chris The roots absorb the water and mineral salts for the plant

Which of the pupils have made the correct statements?

- A) Anne and Bob only
- ✓ B) Anne and Chris only
- C) Bob and Chris only
- D) Chris and Devi only

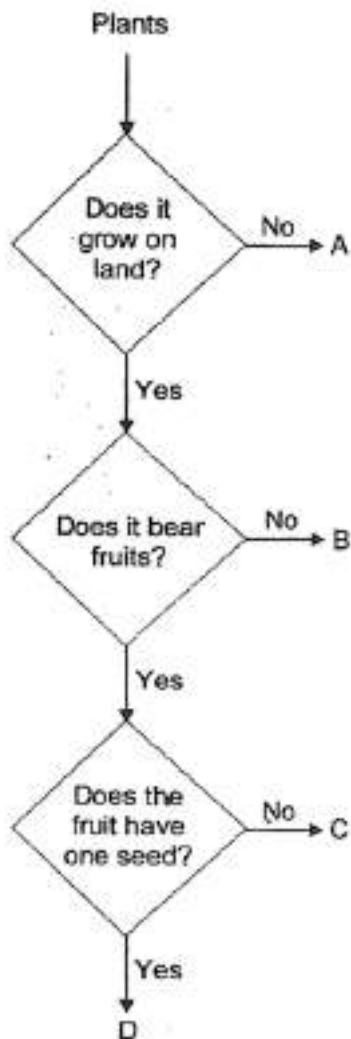
Question Type: Multiple Choice
Randomize Answers: No
Date Added: Wed 7th Oct 2020
Last Modified: N/A
QID#: 24,116,972

Question 8

Primary 4 Science » Primary 4 Science (Term 2)

2 pts

Study the flowchart below.



Based on the flowchart above, which plant is most likely a rambutan tree?

- A) A
- B) B
- C) C
- ✓ D) D

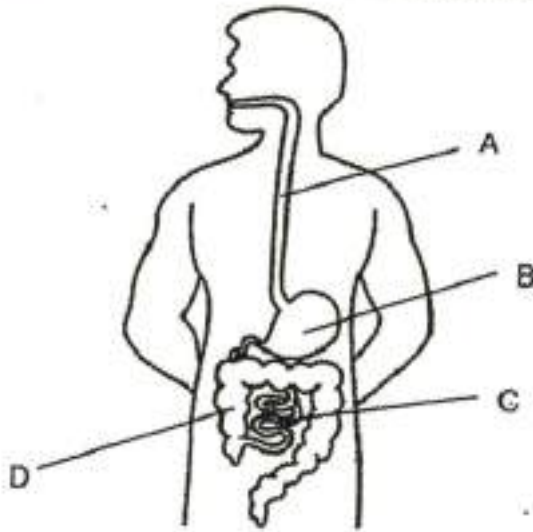
Question Type: Multiple Choice
Randomize Answers: No
Date Added: Wed 7th Oct 2020
Last Modified: N/A
QID#: 24,116,978

Question 9

Primary 4 Science » Primary 4 Science (Term 2)

2 pts

The diagram below shows the human digestive system.



At which part, A, B, C or D is water being absorbed from the undigested food?

- A) A
- B) B
- C) C
- ✓ D) D

Question Type: Multiple Choice
Randomize Answers: No
Date Added: Wed 7th Oct 2020
Last Modified: N/A
QID#: 24,116,999

[Answers](#) | [Edit](#) | [Duplicate](#) | [Used In](#) | [Reorder](#)

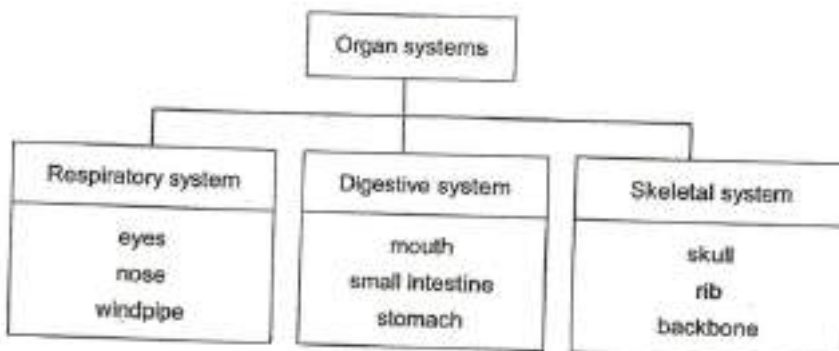
[Remove From Test](#)

Question 10

Primary 4 Science » Primary 4 Science (Term 2)

2 pts

Study the chart below.



Which one of the following organs has been grouped wrongly?

- A) skull
- ✓ B) eyes
- C) nose
- D) small intestine

Question Type: Multiple Choice
Randomize Answers: No
Date Added: Wed 7th Oct 2020
Last Modified: N/A
QID#: 24,117,005

[↗ Answers](#) | [✎ Edit](#) | [📄 Duplicate](#) | [📌 Used In](#) | [⬆ Reorder](#)

[Remove From Test](#)

Question 11

Primary 4 Science » Primary 4 Science (Term 2)

2 pts

Which of the following activities make use of our muscular system?

- A Kicking a ball
- B Playing the violin
- C Eating a hamburger
- D Walking to the bus-stop

- A) A and D only
- B) B and C only
- C) B, C and D only
- ✓ D) A, B, C and D

Question Type: Multiple Choice
Randomize Answers: No
Date Added: Wed 7th Oct 2020
Last Modified: N/A
QID#: 24,117,016

[↗ Answers](#) | [✎ Edit](#) | [📄 Duplicate](#) | [📌 Used In](#) | [⬆ Reorder](#)

[Remove From Test](#)

Question 12

Primary 4 Science » Primary 4 Science (Term 2)

2 pts

Which of the following organ systems work together to carry digested food to all parts of the body?

- A Muscular system
- B Digestive system
- C Circulatory system
- D Respiratory system

- A) A and C only
- ✓ B) B and C only
- C) A, B and D only
- D) B, C and D only

Question Type: Multiple Choice
Randomize Answers: No

Date Added: Wed 7th Oct 2020
 Last Modified: N/A
 QID#: 24,117,026

[Answers](#) | [Edit](#) | [Duplicate](#) | [Used In](#) | [Reorder](#)

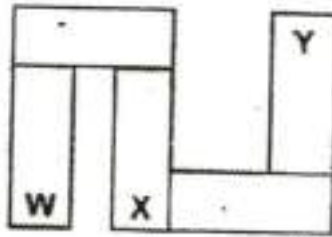
[Remove From Test](#)

Question 13

Primary 4 Science » Primary 4 Science (Term 2)

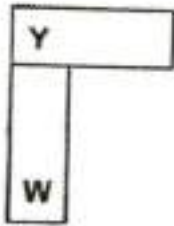
2 pts

Jeremy arranged 5 bar magnets as shown below. W, X and Y represent the poles of the bar magnets.

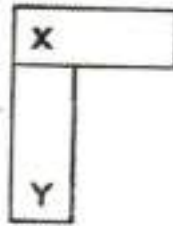


Which of the following arrangements are possible?

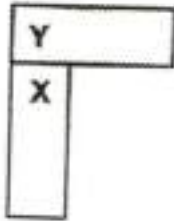
A



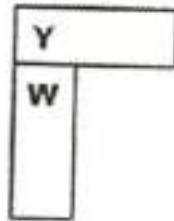
B



C



D



- A) A and B only
 B) B and C only
 ✓ C) B and D only
 D) C and D only

Question Type: Multiple Choice
 Randomize Answers: No
 Date Added: Wed 7th Oct 2020
 Last Modified: N/A
 QID#: 24,117,036

[Answers](#) | [Edit](#) | [Duplicate](#) | [Used In](#) | [Reorder](#)

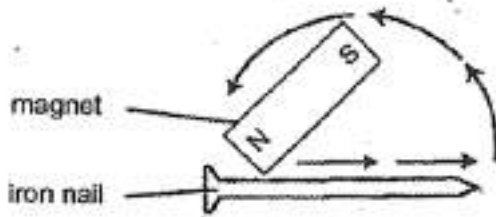
[Remove From Test](#)

Question 14

Primary 4 Science » Primary 4 Science (Term 2)

2 pts

Kimmy set up an experiment to turn an iron nail into a temporary magnet using the stroke method. She stroked the nail 10 times in the same direction using a magnet. She then placed 10 paper clips on the table and observed that the iron nail could attract 3 paper clips.



She wanted to repeat the experiment with another identical iron nail.

What could she do so that the iron nail could attract more clips in the second experiment?

- A) Stroke the nail with the magnet 5 times in one direction
- B) Stroke the nail with the magnet 10 times in one direction
- ✓ C) Stroke the nail with the magnet 20 times in one direction
- D) Stroke the nail with the magnet 20 times in both directions

Question Type: Multiple Choice
 Randomize Answers: No
 Date Added: Wed 7th Oct 2020
 Last Modified: N/A
 QID#: 24,117,073

[Answers](#) | [Edit](#) | [Duplicate](#) | [Used In](#) | [Reorder](#)

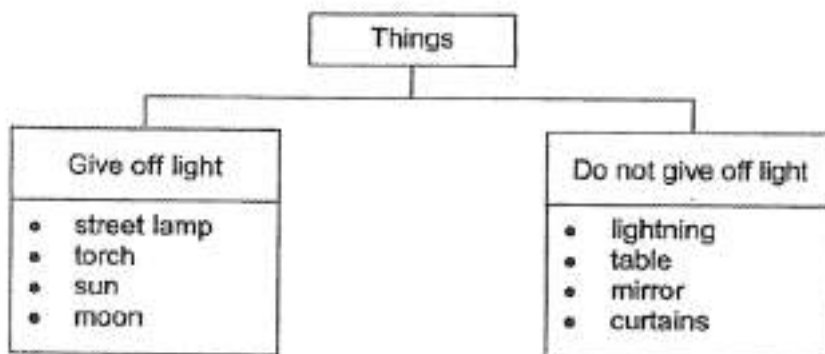
[Remove From Test](#)

Question 15

Primary 4 Science » Primary 4 Science (Term 2)

2 pts

Study the chart below.



Based on the classification chart above, which of the following things has been classified **wrongly**?

- A) sun and mirror
- B) torch and moon
- C) table and curtains
- D) moon and lightning



Question Type: Multiple Choice
Randomize Answers: No
Date Added: Wed 7th Oct 2020
Last Modified: N/A
QID#: 24,117,086

[Answers](#) | [Edit](#) | [Duplicate](#) | [Used In](#) | [Reorder](#)

[Remove From Test](#)

Question 16

Primary 4 Science » Primary 4 Science (Term 2)

2 pts

4 boys saw some stars in the sky at night
 Which of the following statements they made is correct?

- ✓ **A)** We are able to see the stars because they give out their own light
- B)** We are able to see the stars because they reflect light from our eyes
- C)** We are able to see the stars because they reflect light from the clouds
- D)** We are able to see the stars because they take in light from the sun

Question Type: Multiple Choice
Randomize Answers: No
Date Added: Wed 7th Oct 2020
Last Modified: N/A
QID#: 24,117,139

[Answers](#) | [Edit](#) | [Duplicate](#) | [Used In](#) | [Reorder](#)

[Remove From Test](#)

Question 17

Primary 4 Science » Primary 4 Science (Term 2)

2 pts

Lucas then shone his torch from the back of his model igloo to cast a shadow on the screen.

Which one of the following shows the shadow that Lucas could possibly see on the screen?

(1)



(2)



(3)



(4)



A) 1

B) 2



- C) 3
D) 4

Question Type: Multiple Choice
Randomize Answers: No
Date Added: Wed 7th Oct 2020
Last Modified: N/A
QID#: 24,117,145

[Answers](#) | [Edit](#) | [Duplicate](#) | [Used In](#) | [Reorder](#)

[Remove From Test](#)

Question 18

Primary 4 Science » Primary 4 Science (Term 2)

2 pts

Lucas then moved the torch further away from the model igloo

Which one of the following would happen to the shadow that is formed on the screen?

- A) The shadow disappeared
 B) The shadow became bigger
 ✓ C) The shadow became smaller
 D) The shadow remained the same

Question Type: Multiple Choice
Randomize Answers: No
Date Added: Wed 7th Oct 2020
Last Modified: N/A
QID#: 24,117,157

[Answers](#) | [Edit](#) | [Duplicate](#) | [Used In](#) | [Reorder](#)

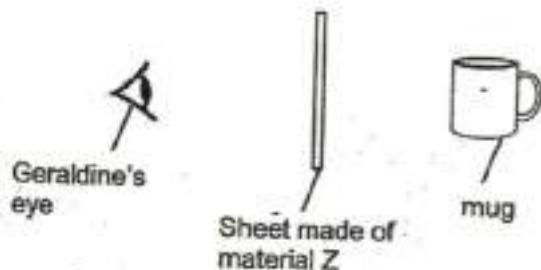
[Remove From Test](#)

Question 19

Primary 4 Science » Primary 4 Science (Term 2)

2 pts

Geraldine placed a sheet made of material Z in front of a mug as shown in the diagram below.



She saw a blurred outline of the mug through the sheet.

Which one of the following materials could Z be?

- A) Ceramic
 B) clear plastic

- ✓ C) frosted glass
- D) aluminium sheet

Question Type: Multiple Choice
Randomize Answers: No
Date Added: Wed 7th Oct 2020
Last Modified: N/A
QID#: 24,117,168

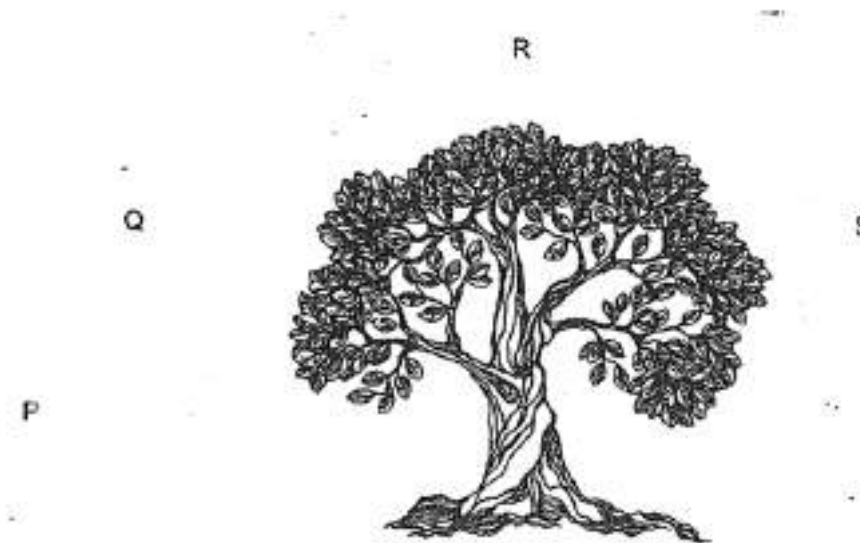
[Answers](#) | [Edit](#) | [Duplicate](#) | [Used In](#) | [Reorder](#)

[Remove From Test](#)

Question 20

Primary 4 Science » Primary 4 Science (Term 2)

2 pts



P, Q, R and S represent the positions of the Sun at different times of the day.

Which one of the following positions of the Sun would cause the shadow of the tree to be the shortest?

- A) P
- B) Q
- ✓ C) R
- D) S

Question Type: Multiple Choice
Randomize Answers: No
Date Added: Wed 7th Oct 2020
Last Modified: N/A
QID#: 24,117,180

[Answers](#) | [Edit](#) | [Duplicate](#) | [Used In](#) | [Reorder](#)

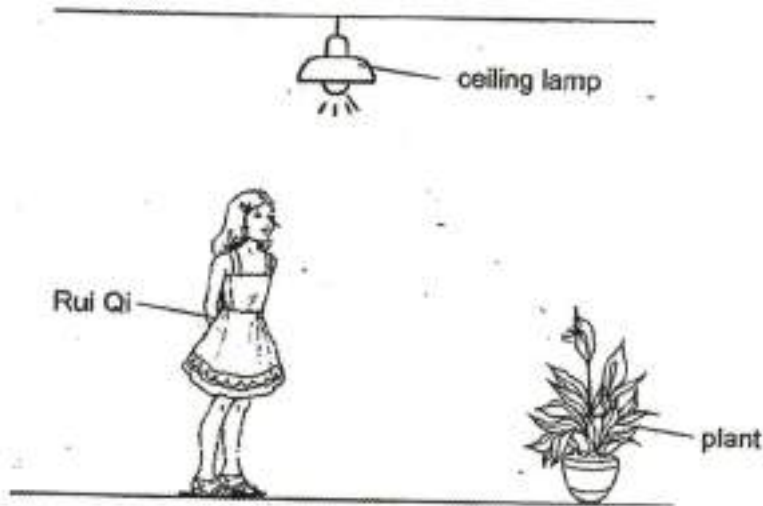
[Remove From Test](#)

Question 21

Primary 4 Science » Primary 4 Science (Term 2)

2 pts

Study the diagram shown below.



Rui Qi is standing under the ceiling lamp and she could see the plant when the ceiling lamp is turned on.

Which one of the following statements correctly explains the observation above?

- A) The plant reflects the light from Rui Qi into the ceiling lamp
- B) Rui Qi reflects the light from the plant into the ceiling lamp
- C) Rui Qi reflects the light from the ceiling lamp into the plant
- ✓ D) The plant reflects the light from the ceiling lamp into the Rui Qi's eyes

Question Type: Multiple Choice
Randomize Answers: No
Date Added: Wed 7th Oct 2020
Last Modified: N/A
QID#: 24,117,212

[Answers](#) | [Edit](#) | [Duplicate](#) | [Used In](#) | [Reorder](#)

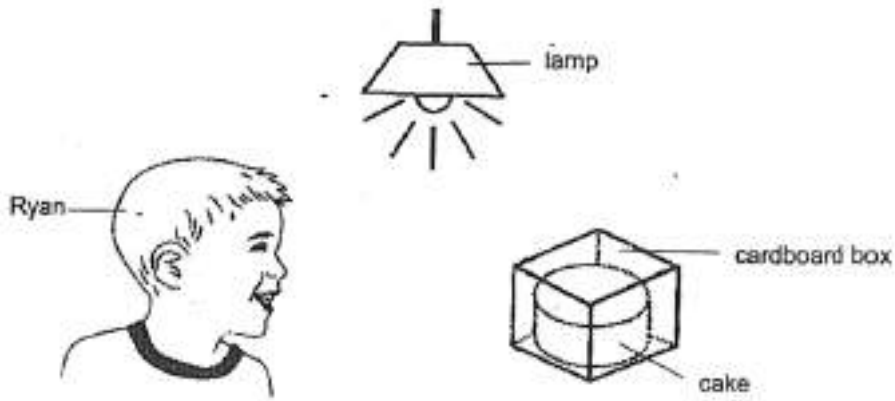
[Remove From Test](#)

Question 22

Primary 4 Science » Primary 4 Science (Term 2)

2 pts

Ryan's mother placed a cake in a cardboard box.



Which one of the following statements explains why Ryan cannot see the cake?

- A) The cake does not give out enough light
- B) Light can pass through the cardboard box
- ✓ C) Light cannot pass through the cardboard box
- D) The cardboard box reflects light into Ryan's eyes

Question Type: Multiple Choice
 Randomize Answers: No
 Date Added: Wed 7th Oct 2020
 Last Modified: N/A
 QID#: 24,117,230

[Answers](#) | [Edit](#) | [Duplicate](#) | [Used In](#) | [Reorder](#)

[Remove From Test](#)

Question 23

Primary 4 Science » Primary 4 Science (Term 2)

2 pts

Study the classification table below carefully.

Gas	Liquid	Solid
carbon dioxide oxygen shadow	milk oil water	ball cookie stone

Which one of the following is classified wrongly?

- A) oil
- B) milk
- C) cookie
- ✓ D) shadow

Question Type: Multiple Choice
 Randomize Answers: No
 Date Added: Wed 7th Oct 2020
 Last Modified: N/A
 QID#: 24,117,240

[Answers](#) | [Edit](#) | [Duplicate](#) | [Used In](#) | [Reorder](#)

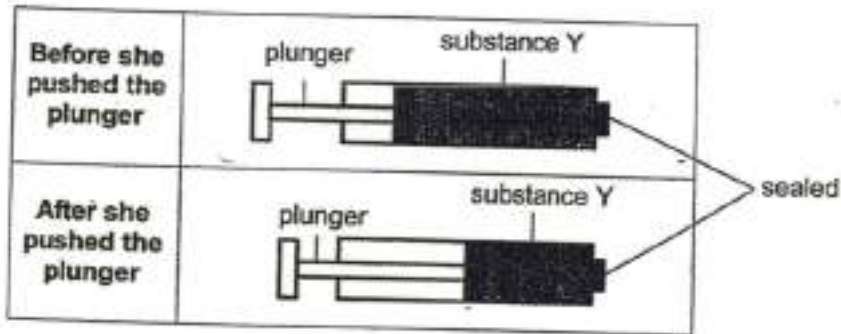
[Remove From Test](#)

Question 24

Primary 4 Science » Primary 4 Science (Term 2)

2 pts

Grace conducted an experiment as shown below. She filled the syringe with 50cm^3 of substance Y and sealed it tightly. She pushed the plunger until it cannot be pushed further. She then observed that the volume of substance Y was reduced to 35cm^3 .



Based only on the experiment above, which of the following property/properties of substance Y can be concluded?

- A It has mass.
- B It occupies space.
- C It can be compressed.
- D It has a definite shape.

- A) C only
- ✓ B) B and C only
- C) A, B and C only
- D) A, C and D only

Question Type: Multiple Choice
 Randomize Answers: No
 Date Added: Wed 7th Oct 2020
 Last Modified: N/A
 QID#: 24,117,256

[Answers](#) | [Edit](#) | [Duplicate](#) | [Used In](#) | [Reorder](#)

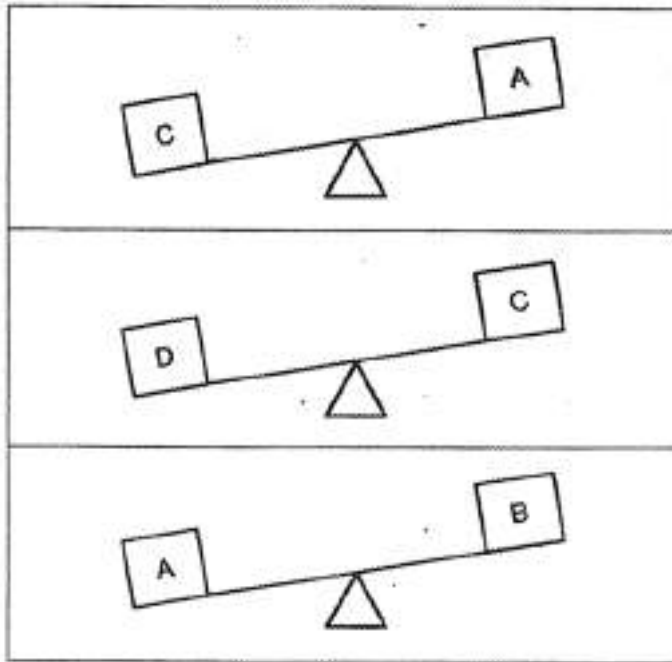
[Remove From Test](#)

Question 25

Primary 4 Science » Primary 4 Science (Term 2)

2 pts

Samuel set up an experiment to compare the masses of four objects, A, B, C and D. He placed the objects on the lever balance as shown in the diagram below.



He then arranged the objects according to their masses.

Which of the following is the correct arrangement?

	Smallest mass → Biggest mass
(1)	B, A, C, D
(2)	B, C, A, D
(3)	D, A, C, B
(4)	D, C, A, B

- ✓ A) 1
B) 2
C) 3
D) 4

Question Type: Multiple Choice
Randomize Answers: No
Date Added: Wed 7th Oct 2020
Last Modified: N/A
QID#: 24,117,267

[Answers](#) | [Edit](#) | [Duplicate](#) | [Used In](#) | [Reorder](#)

[Remove From Test](#)

Question 26

Primary 4 Science » Primary 4 Science (Term 2)

2 pts

The table below shows the characteristics of 3 substances, X, Y and Z. A tick (✓) shows that the substance has the characteristic.

Characteristic	Substance		
	X	Y	Z
has a definite shape			✓
has a definite volume	✓		✓
can be compressed		✓	

Which one of the following statements is true?

- A) Substance X is a gas
- B) Substance Z is a liquid
- C) Substance X and Z are both liquids
- ✓ D) Substance Y is a gas and substance Z is a solid

Question Type: Multiple Choice
Randomize Answers: No
Date Added: Wed 7th Oct 2020
Last Modified: N/A
QID#: 24,117,287

[Answers](#) | [Edit](#) | [Duplicate](#) | [Used In](#) | [Reorder](#)

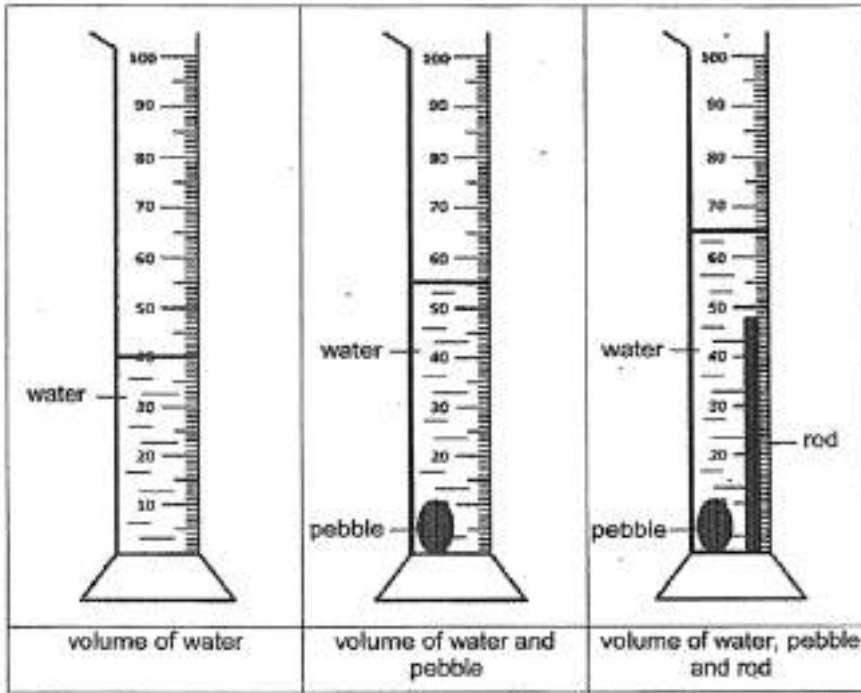
[Remove From Test](#)

Question 27

Primary 4 Science » Primary 4 Science (Term 2)

2 pts

Rebecca wants to find the volume of a pebble and a rod using a measuring cylinder. She set up the experiment as shown below.



Based on the results from her experiment, what are the volumes of the pebble and the rod?

	volume of pebble (cm ³)	volume of rod (cm ³)
(1)	10	25
(2)	15	10
(3)	15	25
(4)	25	15

- A) 1
 ✓ B) 2
 C) 3
 D) 4

Question Type: Multiple Choice
Randomize Answers: No
Date Added: Wed 7th Oct 2020
Last Modified: N/A
QID#: 24,117,292

[Answers](#) | [Edit](#) | [Duplicate](#) | [Used In](#) | [Reorder](#)

[Remove From Test](#)

Question 28

Primary 4 Science » Primary 4 Science (Term 2)

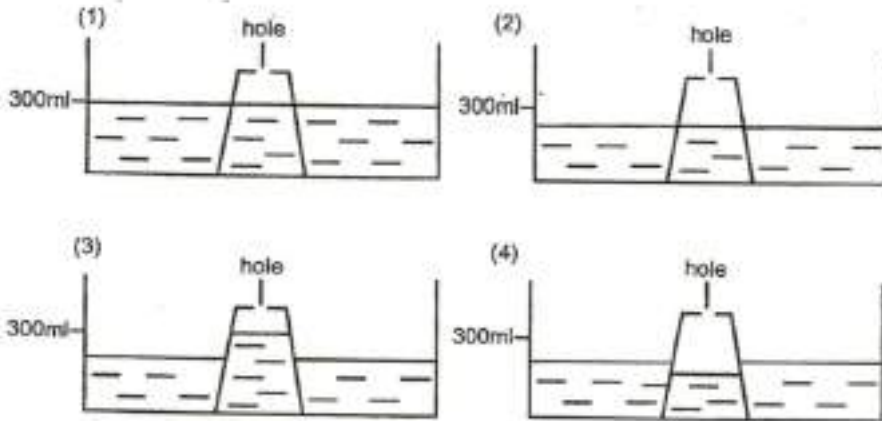
2 pts

Monica set up an experiment as shown below. She filled a container with water and pushed an inverted plastic cup into the water in the container.



She then poked a hole at the top of the plastic cup with a needle.

Which one of the following shows the correct new water level in the cup?



- A) 1
- ✓ B) 2
- C) 3
- D) 4

Question Type: Multiple Choice
 Randomize Answers: No
 Date Added: Wed 7th Oct 2020
 Last Modified: N/A
 QID#: 24,117,307

[Answers](#) |
 [Edit](#) |
 [Duplicate](#) |
 [Used In](#) |
 [Reorder](#)
[Remove From Test](#)

Question 29

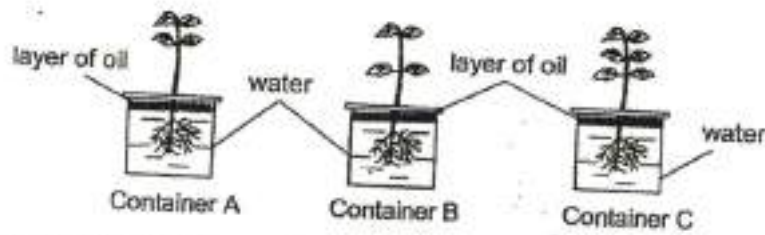
Primary 4 Science » Primary 4 Science (Term 2) 0 pts

Booklet B

This section is designed for extended answers that parent/ teacher will have to assign and guide child to attempt after the test has been completed.

Grading: This question type is not graded on this system and will not affect the final score as it was designed in such a way that it requires manual assistance.

Mr Ng carried out an experiment as shown below. He put 3 similar plants into containers, A, B and C. A layer of oil was poured into each container to prevent any water loss.



The volume of water in each container was measured after a week and recorded in the table below.

Container	Volume of water (ml)	
	Day 1	Day 7
A	200	175
B	200	190
C	200	160

- (a) Based on the results in the experiment above, state one characteristic of living things. [1]
- _____
- (b) Based on the experiment above, explain why the amount of water in Container C was the least after 7 days. [2]
- _____
- _____
- (c) Besides absorbing water and mineral salts, state one other function of roots. [1]
- _____

Question Type: Essay
 Date Added: Wed 7th Oct 2020
 Last Modified: N/A
 QID#: 24,117,331

Correctly answered feedback

- a) Living things need water to survive.
 b) It takes in the most water because it has the most leaves to make the food for the plant.
 c) It holds the plant firmly to the ground.

Incorrectly answered feedback

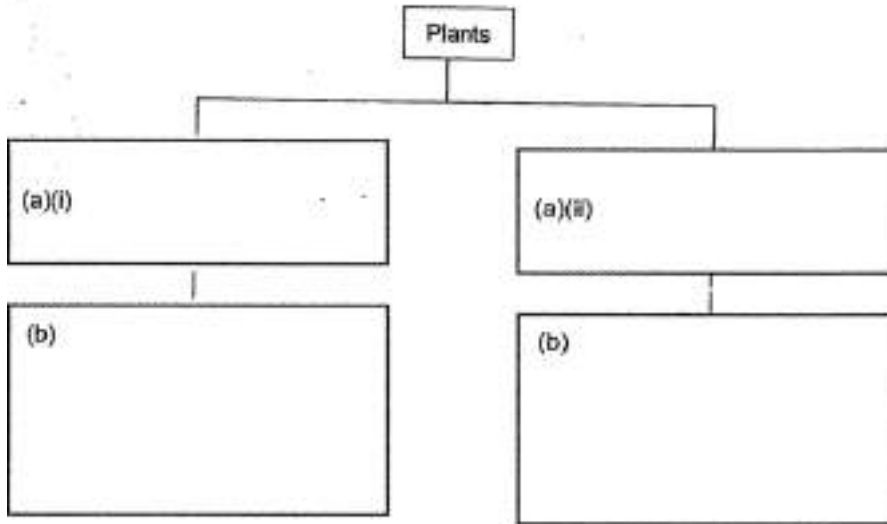
- a) Living things need water to survive.
 b) It takes in the most water because it has the most leaves to make the food for the plant.
 c) It holds the plant firmly to the ground.

Question 30

Study the table below.

Characteristics	Plant A	Plant B	Plant C	Plant D
Has flowers	✓			✓
Has big leaves		✓		
Has a weak stem		✓	✓	✓

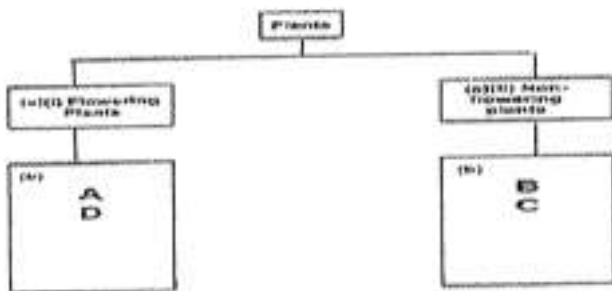
- (a) Based on the table above, state a suitable heading for the classification chart below. [1]
- (b) Based on your headings in (a), classify plants A, B, C and D into the classification chart below. [2]



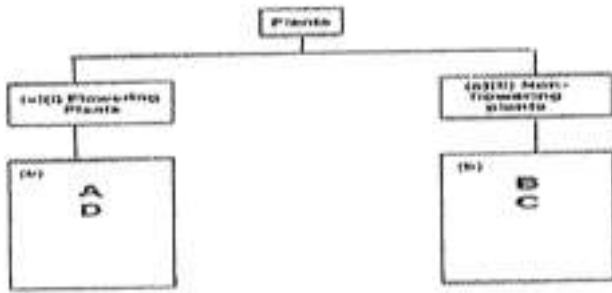
Please type "done" to proceed to the next question

Question Type: Essay
 Date Added: Wed 7th Oct 2020
 Last Modified: N/A
 QID#: 24,117,373

Correctly answered feedback



Incorrectly answered feedback



[Answers](#) |
 [Edit](#) |
 [Duplicate](#) |
 [Used In](#) |
 [Reorder](#)

[Remove From Test](#)

Question 31

Primary 4 Science » Primary 4 Science (Term 2)

0 pts

The table below shows the characteristics of animals A, B, C and D.

Characteristics	Animal A	Animal B	Animal C	Animal D
Lays eggs	Yes	Yes	No	Yes
Breathes through gills	No	Yes	No	No
Has wings	Yes	No	No	Yes
Has 3 body parts	Yes	No	No	No

- (a) John classified animal A as an insect. Based on the characteristics of animal A in the table above, explain why he is correct. [1]

- (b) State another characteristic of animals that belong to the same group as animal A. [1]

Question Type: Essay
 Date Added: Wed 7th Oct 2020
 Last Modified: N/A
 QID#: 24,117,396

Correctly answered feedback

- a) Animal A has 3 body parts and only insects have 3 body parts, thus it is an insect.
 b) They have 3 pair of legs.

Incorrectly answered feedback

- a) Animal A has 3 body parts and only insects have 3 body parts, thus it is an insect.
 b) They have 3 pair of legs.

[Answers](#) |
 [Edit](#) |
 [Duplicate](#) |
 [Used In](#) |
 [Reorder](#)

[Remove From Test](#)

Question 32

Primary 4 Science » Primary 4 Science (Term 2)

2 pts

Match the options below:

Clue

Match

Goldfish

B

Points: +0.5 -0

Monkey

C

Points: +0.5 -0

Mosquito

A

Points: +0.5 -0

Penguin

D

Points: +0.5 -0

Question Type: Matching
Shuffle Mode: Shuffle Matches Only
Date Added: Wed 7th Oct 2020
Last Modified: N/A
QID#: 24,117,406

[Answers](#) |
 [Edit](#) |
 [Duplicate](#) |
 [Used In](#) |
 [Reorder](#)

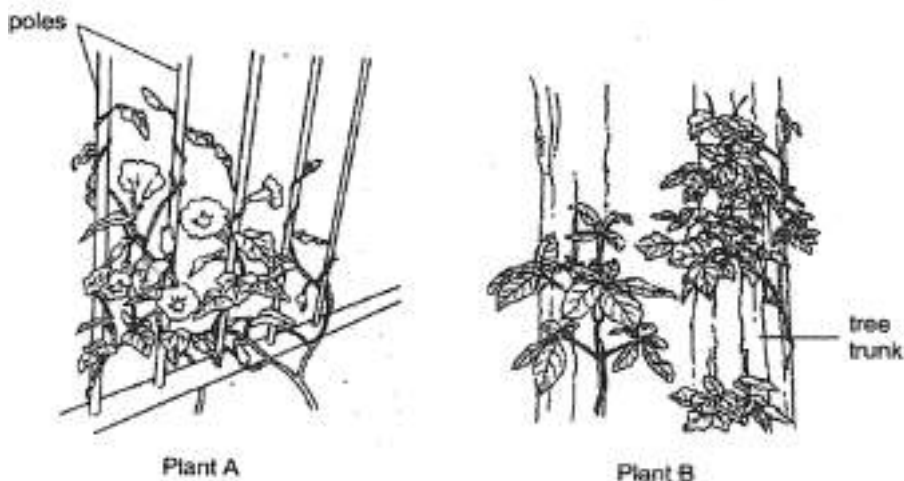
[Remove From Test](#)

Question 33

Primary 4 Science » Primary 4 Science (Term 2)

0 pts

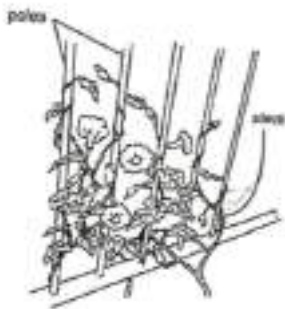
The diagram shows two plants, A and B.



- (a) Label clearly the stem of plant A in the diagram above. [1]
- (b) How are the stems of plants A and B similar? [1]
-
- (c) Explain how the poles and the tree trunk help plants A and B get more sunlight to make food. [1]
-

Question Type: Essay
 Date Added: Wed 7th Oct 2020
 Last Modified: N/A
 QID#: 24,117,435

Correctly answered feedback

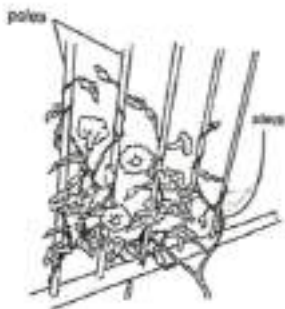


a)

Plant A

- b) Both stems of plant A and B are weak.
 c) It supports the stem of plant A and B so that the stems can hold the leaves up and get sunlight to make food.

Incorrectly answered feedback



a)

Plant A

- b) Both stems of plant A and B are weak.
 c) It supports the stem of plant A and B so that the stems can hold the leaves up and get sunlight to make food.

[Answers](#) | [Edit](#) | [Duplicate](#) | [Used In](#) | [Reorder](#)

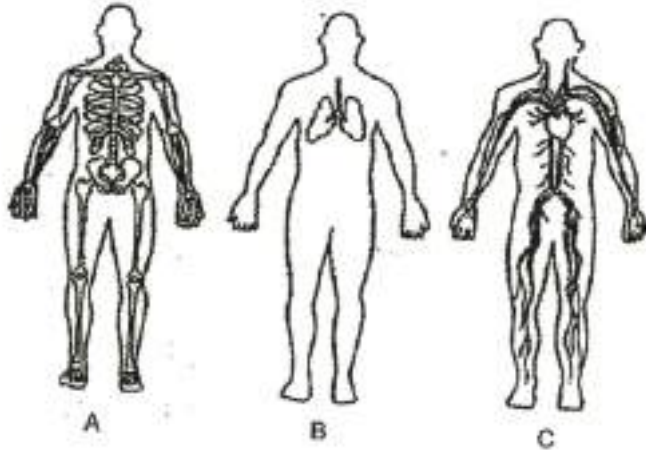
[Remove From Test](#)

Question 34

Primary 4 Science » Primary 4 Science (Term 2)

1 pt

The diagrams below represent 3 human organ systems.



(a) (i) Which one of the above organ systems, A, B or C, work with the muscular system to enable us to move?

[1]

- ✓ A) A
- B) B
- C) C

Question Type: Multiple Choice
Randomize Answers: No
Date Added: Wed 7th Oct 2020
Last Modified: N/A
QID#: 24,117,452

[Answers](#) | [Edit](#) | [Duplicate](#) | [Used In](#) | [Reorder](#)

[Remove From Test](#)

Question 35

Primary 4 Science » Primary 4 Science (Term 2)

1 pt

Identify the human organ system that you have chosen in (a)(i)

Accepted answers:

- ✓ Skeletal system
- ✓ Skeletal

Question Type: Free Text
Date Added: Wed 7th Oct 2020
Last Modified: N/A
QID#: 24,117,458

[Answers](#) | [Edit](#) | [Duplicate](#) | [Used In](#) | [Reorder](#)

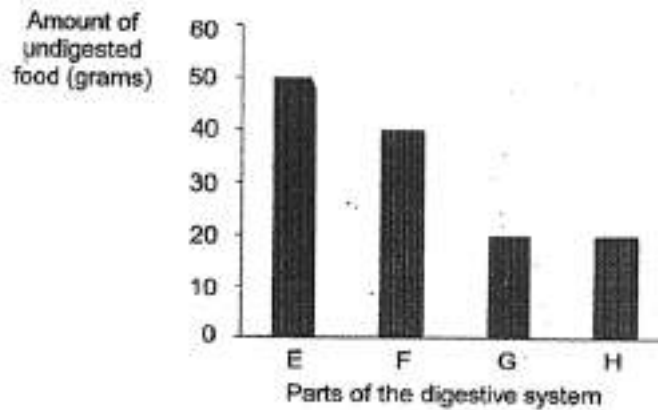
[Remove From Test](#)

Question 36

Primary 4 Science » Primary 4 Science (Term 2)

0 pts

En Jie ate 50 grams of fried chicken for lunch. The graph below shows the amount of undigested food leaving the four different parts of En Jie's digestive system.



- (b) Based on the graph above, which part(s) of the digestive system, E, F, G or H, does/do digestion take place? Explain your answer using the data from the graph above. [2]

Question Type: Essay
 Date Added: Wed 7th Oct 2020
 Last Modified: N/A
 QID#: 24,117,468

Correctly answered feedback

b) Part E to F, the amount of undigested food decreased from E to F. From F to G, the amount of undigested food decreased.

Incorrectly answered feedback

b) Part E to F, the amount of undigested food decreased from E to F. From F to G, the amount of undigested food decreased.

[Answers](#) | [Edit](#) | [Duplicate](#) | [Used In](#) | [Reorder](#)

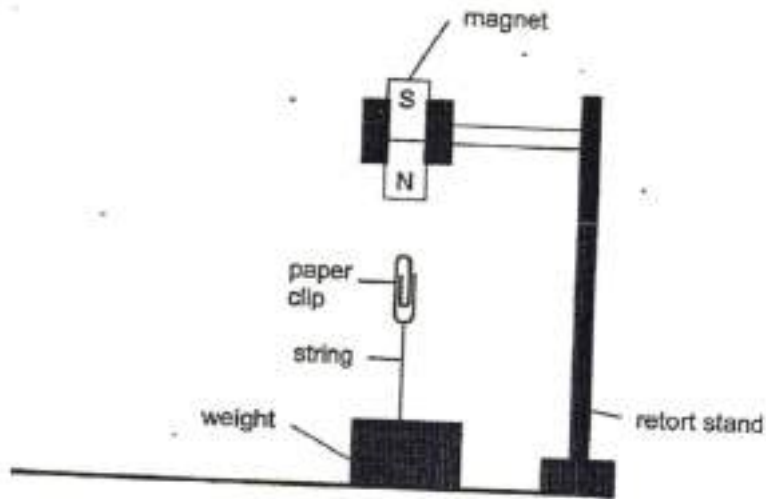
[Remove From Test](#)

Question 37

Primary 4 Science » Primary 4 Science (Term 2)

0 pts

Mei Ling set up an experiment as shown below.



(a) Explain why the paper clip is able to "float" in the air.

[2]

Question Type: Essay
 Date Added: Wed 7th Oct 2020
 Last Modified: N/A
 QID#: 24,117,507

Correctly answered feedback

a) It is made of a magnetic material which can be attracted to a magnet but the string is holding it back.

Incorrectly answered feedback

a) It is made of a magnetic material which can be attracted to a magnet but the string is holding it back.

[Answers](#) | [Edit](#) | [Duplicate](#) | [Used In](#) | [Reorder](#)

[Remove From Test](#)

Question 38

Primary 4 Science » Primary 4 Science (Term 2)

1 pt

State a possible material of the paper clip

Accepted answers:

✓ Iron

Question Type: Free Text
 Date Added: Wed 7th Oct 2020
 Last Modified: N/A
 QID#: 24,117,545

[Answers](#) | [Edit](#) | [Duplicate](#) | [Used In](#) | [Reorder](#)

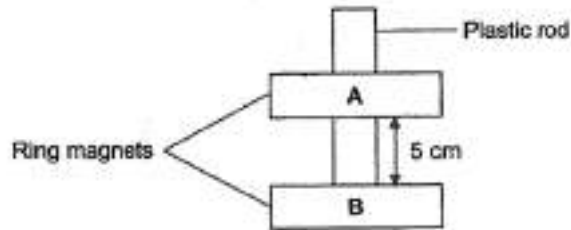
[Remove From Test](#)

Question 39

Primary 4 Science » Primary 4 Science (Term 2)

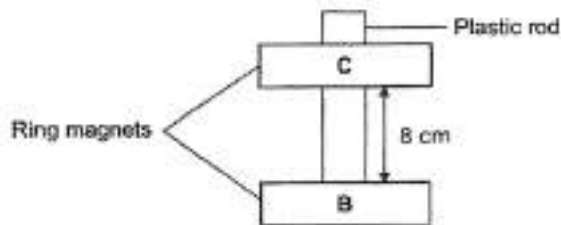
0 pts

Mei Ling saw a "floating" toy with two ring magnets which pass through a smooth plastic rod as shown below.



(c) State a property of magnets which is shown in the diagram above. [1]

Mei Ling replaced magnet A with magnet C. She observed that the distance between magnets B and C became greater.



(d) Explain her observation. [1]

Question Type: Essay
 Date Added: Wed 7th Oct 2020
 Last Modified: N/A
 QID#: 24,117,628

Correctly answered feedback

- c) The like poles of the magnet repels.
 d) Magnet C had a stronger magnetic strength than magnet A so it is attracted over a longer distance.

Incorrectly answered feedback

- c) The like poles of the magnet repels.
 d) Magnet C had a stronger magnetic strength than magnet A so it is attracted over a longer distance.

[Answers](#) | [Edit](#) | [Duplicate](#) | [Used In](#) | [Reorder](#)

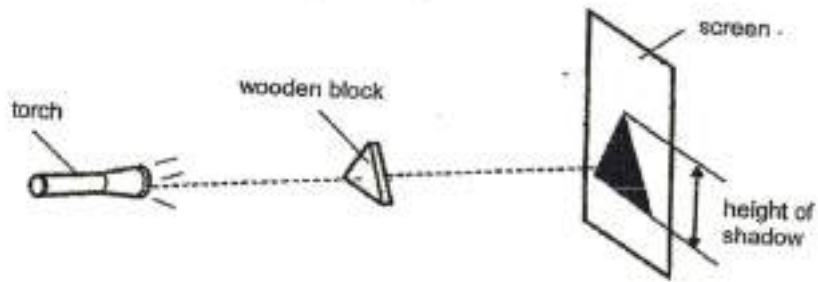
[Remove From Test](#)

Question 40

Primary 4 Science » Primary 4 Science (Term 2)

0 pts

Colin set up an experiment as shown in the diagram below.



He moved the wooden block away from the screen and recorded the height of the shadow formed in the table below.

Distance between the wooden block and the screen (cm)	Height of the shadow (cm)
2	11
4	12
6	13

(a) Explain how the shadow of the wooden block is formed. [1]

(b) Based on the table above, what would happen to the height of the shadow when Colin increased the distance between the wooden block and the screen? [1]

(c) If the positions of the wooden block and screen are fixed, suggest one way Colin can increase the height of the shadow using the same set-up as shown above. [1]

Question Type: Essay
 Date Added: Wed 7th Oct 2020
 Last Modified: N/A
 QID#: 24,117,724

Correctly answered feedback

- a) The shadow of the wooden block is formed when it blocks light from passing through since light travels in a straight line a shadow is casted on the screen.
 b) The height of the shadow would increase when colin increased the distance between the wooden block and the screen.
 c) He could move the torch closer to the wooden block.

Incorrectly answered feedback

- a) The shadow of the wooden block is formed when it blocks light from passing through since light travels in a straight line a shadow is casted on the screen.
- b) The height of the shadow would increase when colin increased the distance between the wooden block and the screen.
- c) He could move the torch closer to the wooden block.

[Answers](#) |
 [Edit](#) |
 [Duplicate](#) |
 [Used In](#) |
 [Reorder](#)

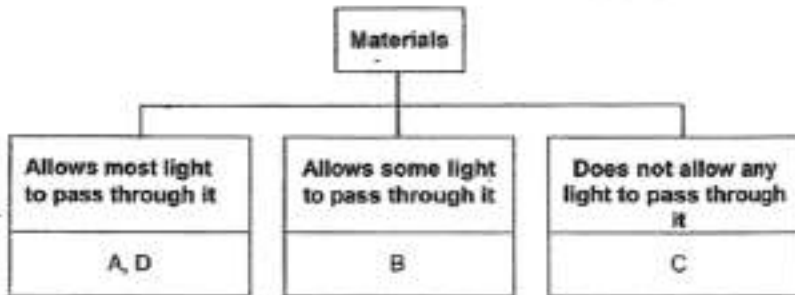
[Remove From Test](#)

Question 41

Primary 4 Science » Primary 4 Science (Term 2)

0 pts

The classification chart below shows four different materials, A, B, C and D.

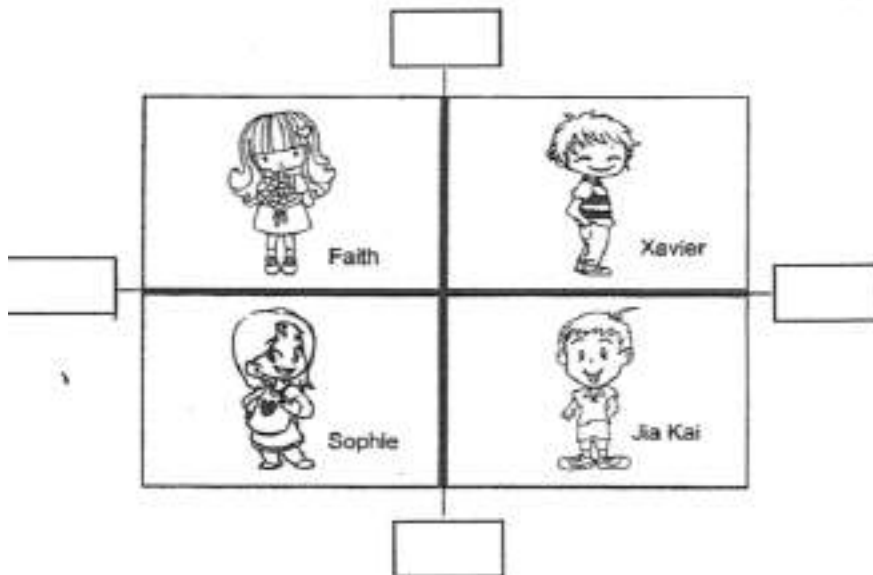


Mr Tan used each of these materials to build four walls of the same thickness to divide his playroom into 4 equal cubicles. Each material was used once.

Mr Tan's children stood in the 4 cubicles and observed the following:-

- i) Faith and Xavier could not see each other.
- ii) Xavier and Jia Kai could see each other clearly.
- iii) Sophie and Faith could see a blurry outline of each other.
- iv) Sophie and Jia Kai could see each other clearly.

Based on the information above, identify the materials used for building each wall and write the letters, A, B, C and D, in each of the boxes below. Each letter can only be used once. [2]

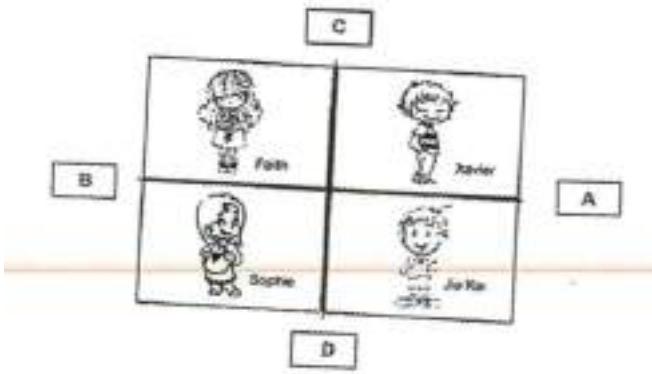


Please

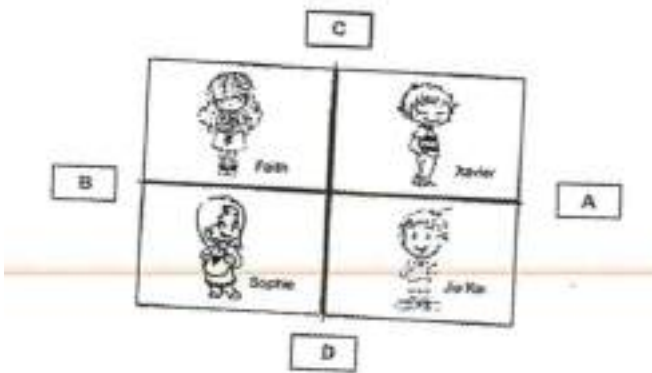
type "done" to proceed to the next question

Question Type: Essay
Date Added: Wed 7th Oct 2020
Last Modified: N/A
QID#: 24,117,756

Correctly answered feedback



Incorrectly answered feedback



[Answers](#) | [Edit](#) | [Duplicate](#) | [Used In](#) | [Reorder](#)

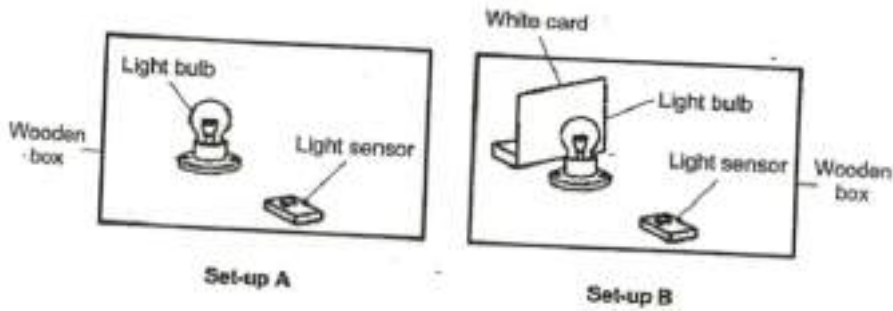
[Remove From Test](#)

Question 42

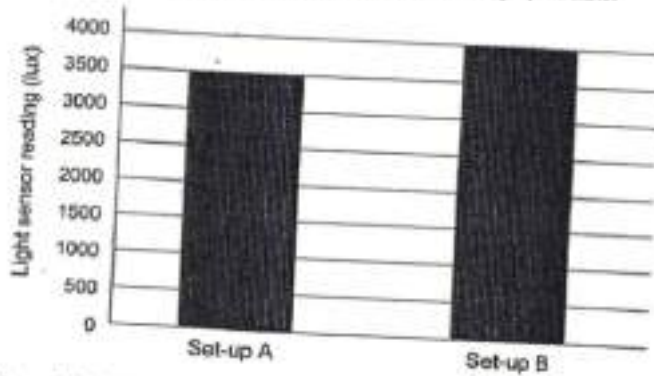
Primary 4 Science » Primary 4 Science (Term 2)

0 pts

Kyan conducted an experiment using 2 identical lit light bulbs as shown in Set-ups A and B below. He used a light sensor to measure the amount of light given out by each of the light bulb.



He showed the results of his experiment in the bar graph below.



(a) Explain the results observed above.

(2)

Question Type: Essay
Date Added: Wed 7th Oct 2020
Last Modified: N/A
QID#: 24,117,798

Correctly answered feedback

a)The white card in set-up B reflect light into the light sensor , hence the light sensors detects more light in set-up B.

Incorrectly answered feedback

a)The white card in set-up B reflect light into the light sensor , hence the light sensors detects more light in set-up B.

[Answers](#) | [Edit](#) | [Duplicate](#) | [Used In](#) | [Reorder](#)

[Remove From Test](#)

Question 43

Primary 4 Science » Primary 4 Science (Term 2)

0 pts

The diagram below shows a man working along the road.



- (b) During the day, the man wears a yellow helmet when he is working along the road. Explain how the car driver can see the yellow helmet from a distance. [1]

During the night, silver bands on the cones and the man's jacket ensure that car drivers can see him better when he is working along the road.

- (c) Explain how having the silver bands help car drivers see the man and the traffic cones better at night when the car headlights shine on them. [1]

Question Type: Essay
 Date Added: Wed 7th Oct 2020
 Last Modified: N/A
 QID#: 24,117,804

Correctly answered feedback

- b) The yellow helmet would reflect light into the car driver's eyes...**
c) The silver band reflects more light into the car drivers' eyes when the headlight shine on them.

Incorrectly answered feedback

- b) The yellow helmet would reflect light into the car driver's eyes...**
c) The silver band reflects more light into the car drivers' eyes when the headlight shine on them.

[Answers](#) | [Edit](#) | [Duplicate](#) | [Used In](#) | [Reorder](#)

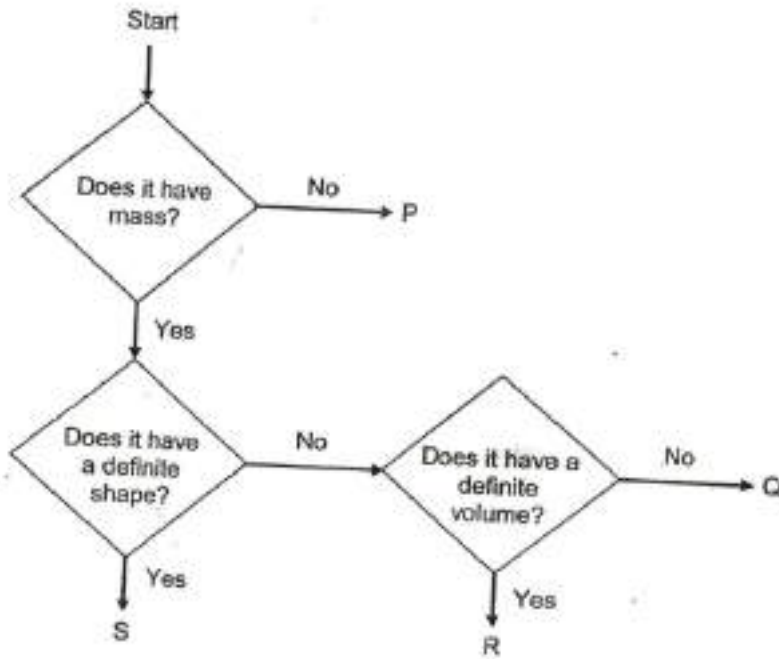
[Remove From Test](#)

Question 44

Primary 4 Science » Primary 4 Science (Term 2)

0 pts

Study the flowchart below.



- (a) Based on the flowchart above, state all the properties of substance S. [1]

- (b) Based on the flowchart above, state the difference between substance R and Q. [1]

Question Type: Essay
 Date Added: Wed 7th Oct 2020
 Last Modified: N/A
 QID#: 24,117,886

Correctly answered feedback

**Q38a) Substance S has mass and has a definite shape.
 b) Substance R has a definite volume but substance Q does not have definite volume.**

Incorrectly answered feedback

**Q38a) Substance S has mass and has a definite shape.
 b) Substance R has a definite volume but substance Q does not have definite volume.**

[Answers](#) | [Edit](#) | [Duplicate](#) | [Used In](#) | [Reorder](#)

[Remove From Test](#)

Question 45

Primary 4 Science » Primary 4 Science (Term 2)

1 pt

State an example of P

Accepted answers:

✓ shadow

Question Type: Free Text
 Date Added: Wed 7th Oct 2020
 Last Modified: N/A
 QID#: 24,117,934

Answers | Edit | Duplicate | Used In | Reorder

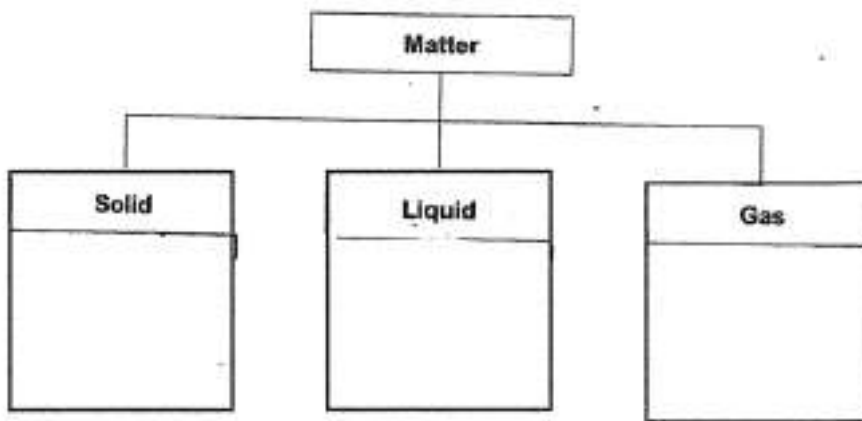
Remove From Test

Question 46

Primary 4 Science » Primary 4 Science (Term 2)

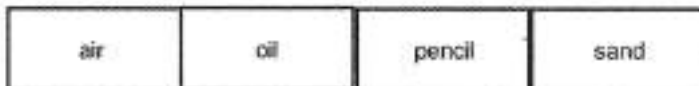
0 pts

Study the classification chart below carefully.



(a) Classify all the following objects into the chart above.

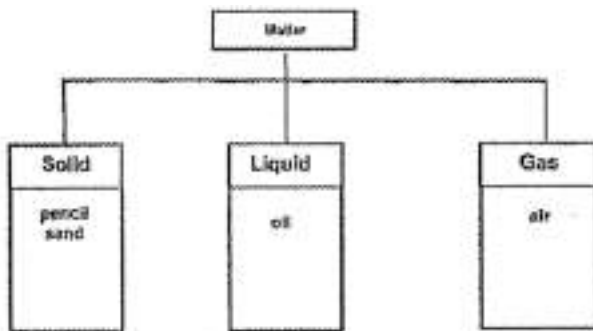
[2]



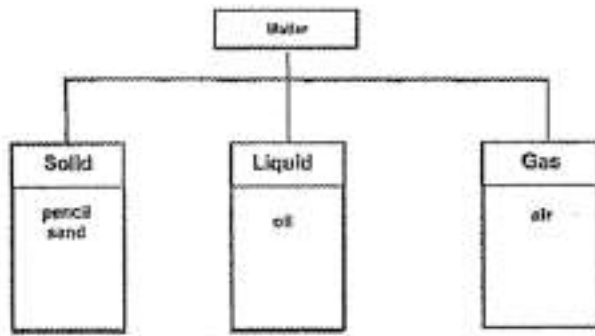
Please type "done" to proceed to the next question

Question Type: Essay
 Date Added: Wed 7th Oct 2020
 Last Modified: N/A
 QID#: 24,117,960

Correctly answered feedback



Incorrectly answered feedback



[Answers](#) | [Edit](#) | [Duplicate](#) | [Used In](#) | [Reorder](#)

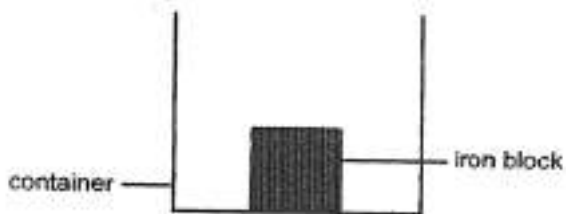
[Remove From Test](#)

Question 47

Primary 4 Science » Primary 4 Science (Term 2)

1 pt

Cheryl placed an iron block in a container as shown below.



(b) (i) Identify the state of matter that the iron block is in.

[1]

Accepted answers:

✓ Solid

Question Type: Free Text
Date Added: Wed 7th Oct 2020
Last Modified: N/A
QID#: 24,117,964

[Answers](#) | [Edit](#) | [Duplicate](#) | [Used In](#) | [Reorder](#)

[Remove From Test](#)

Question 48

Primary 4 Science » Primary 4 Science (Term 2)

0 pts

Based on the observation above, explain your answer in (b)(i)

Question Type: Essay
Date Added: Wed 7th Oct 2020
Last Modified: N/A
QID#: 24,117,968

Correctly answered feedback

the iron block is a solid so it has a definite shape and does not take the shape of the container

Incorrectly answered feedback

the iron block is a solid so it has a definite shape and does not take the shape of the container

[Answers](#) | [Edit](#) | [Duplicate](#) | [Used In](#) | [Reorder](#)

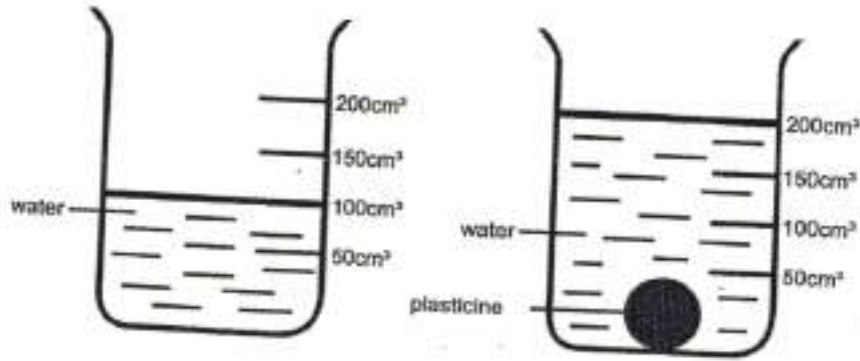
[Remove From Test](#)

Question 49

Primary 4 Science » Primary 4 Science (Term 2)

1 pt

Sandra set up an experiment as shown below. She filled a beaker with 100cm³ of water. She then placed a 40g ball of plasticine into the beaker of water.



(a) (i) What is the volume of the ball of plasticine?

_____ cm³

[1]

Accepted answers:

- ✓ 100
- ✓ 100cm³
- ✓ 100 cm³

Question Type: Free Text
Date Added: Wed 7th Oct 2020
Last Modified: N/A
QID#: 24,117,973

[Answers](#) | [Edit](#) | [Duplicate](#) | [Used In](#) | [Reorder](#)

[Remove From Test](#)

Question 50

Primary 4 Science » Primary 4 Science (Term 2)

0 pts

Based on the results above, state a property of the plasticine

Question Type: Essay
Date Added: Wed 7th Oct 2020
Last Modified: N/A
QID#: 24,117,980

Correctly answered feedback

the plasticine has volume

Incorrectly answered feedback

the plasticine has volume

Answers | Edit | Duplicate | Used In | Reorder

Remove From Test

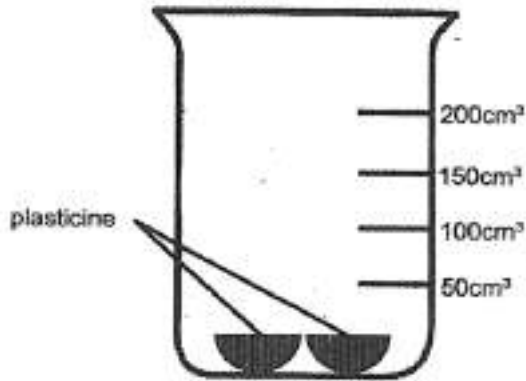
Question 51

Primary 4 Science » Primary 4 Science (Term 2)

0 pts

Cheryl then cut the ball of plasticine into 2 equal pieces and placed them back into the same beaker of water.

(b) (i) In the diagram below, draw a line to indicate the water level of the beaker of water. [1]

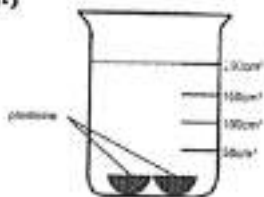


(ii) Explain your answer in (b)(i). [1]

Question Type: Essay
Date Added: Wed 7th Oct 2020
Last Modified: N/A
QID#: 24,117,991

Correctly answered feedback

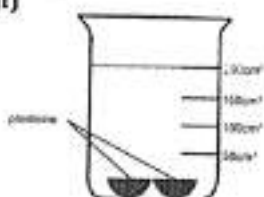
b)i)



ii) Although cut in half, the plasticine still has the same amount of volume so the water level will be the same.

Incorrectly answered feedback

b)i)



ii) Although cut in half, the plasticine still has the same amount of volume so the water level will be the same.

 Answers |  Edit |  Duplicate |  Used In |  Reorder

[Remove From Test](#)